



# SMART AUTOMATIC POULTRY CHICKEN FEEDER



 Smart

# AALROOT

 +91 7010105777

 [info@aalroot.com](mailto:info@aalroot.com)

 [www.aalroot.com](http://www.aalroot.com)

## High Yield

→ It allows chickens to consume more feed and result high poultry



# AALROOT

## WHAT IS SMART CHICKEN FEEDER?

### WHY TO BUY THE AALROOT SMART AUTOMATIC CHICKEN FEEDER?



#### No Labour Cost

Reduce labour cost for poultry management.



#### Automatic Feeding

Automatic smart chicken feeder support to manage poultry smartly.



#### Live Monitoring

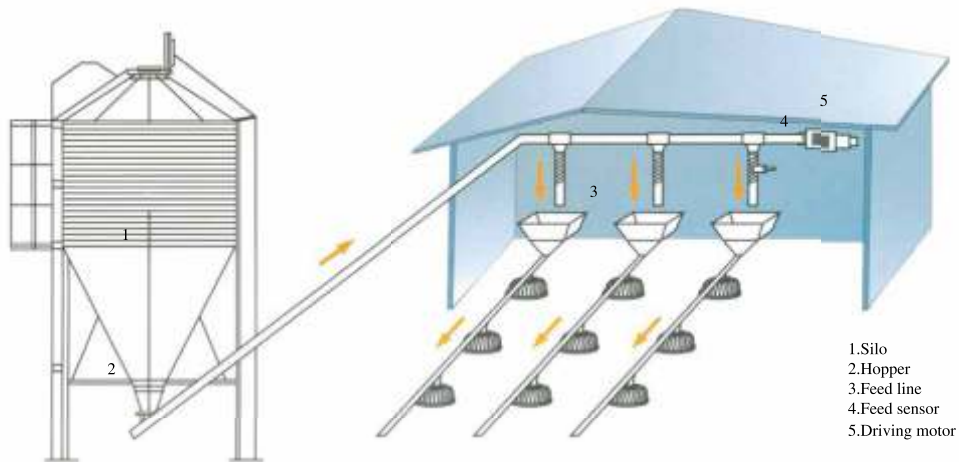
It will helps to monitor the feeder level in live day by day.

**WASTE**

#### Decreased Waste

With automatic feeders the feed is stored inside the feeder; so you eliminate waste because it reduces spillage and stops it spoiling in the rain.

## MAIN FEEDING LINE



The automatic feeding system consist of silo or hopper, driving device, auger, feed sensor, etc. The closed chicken house design improves the management efficiency, reduce the cross infection rate, achieve the highly automated control of the chicken farm.

### SILO

- \* The silo is composed of silo body, silo lid, silo legs, etc. Silo body is made of 275g/m hot galvanized panel(two sides). There is a hole on the type cone for checking the feed level. We have different types of silos to meet different requirements.
- \* Silo characteristics: high strength, anti corrosive, easy installation and long service life.



Volume	Feed weight	Diameter	Layer	Cone thickness	Body thickness	Leg thickness	Total Weight	Total Height
10 m <sup>3</sup>	5	2.45	1	1.0	1.0	2.0	420	4.7
14.1 m <sup>3</sup>	8	2.45	2	1.0	1.0	2.0	470	5.6
17.7 m <sup>3</sup>	10	2.75	2	1.0	1.0	2.0	600	5.6
21.5 m <sup>3</sup>	15	3.1	2	1.0	1.0	2.0	640	5.6
23.2 m <sup>3</sup>	16	2.8	3	1.0	1.0	2.0	655	6.5
28.2 m <sup>3</sup>	20	3.1	3	1.0	1.0	2.0	755	6.5



## Hopper

- \* Surface spray treatment, wear-resistant, anti-corrosion, beautiful appearance;
- \* The whole hopper is detachable, saving more space;
- \* Four different sizes of hoppers for you to choose. You can choose the suitable size according to your feeding quantity and individual needs, you can also customized individually according to your requirements.

Volume (m <sup>3</sup> )	Feed(Kg)	Size(m)	Thickness (mm)	Thickness of leg(mm)	Weight (kg)	High (m)
0.6	390	2.45	2	2.0	420	1.055
0.8	520	2.45	2	2.0	470	1.055
1.2	780	1.4×1.36	2	3	600	1.255
1.4	910	1.4×1.36	2	3	640	1.455



## Auger and Pipe

Spring auger: Imported from South Africa, made of high quality spring steel, long service life and not easily deformed.

Conveying pipe diameter	Conveying pipe thickness	Conveying pipe material	Auger model	Feeding ability	Convey length
75mm	3.6mm	PVC	75/227	1400kg/h	60m
90mm	4.5mm	PVC	75/322	2400kg/h	40m



## Motor

- \* Die-cast aluminium alloy shell and input & output flange, excellent heat dissipation, no rust, stable and reliable.
- \* Split Gearbox, quick and easy to replacement.

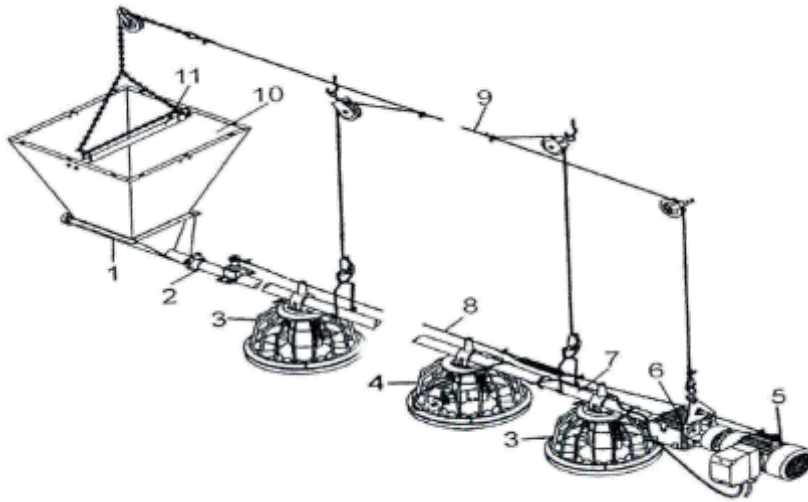


## Sensor

Two kinds off imported sensors to choose.

- \* Germany IFM feed level sensor (double wires).
- \* Israel Agrolagic feed level sensor (three wires).

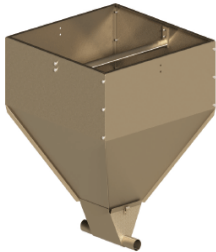
## PAN FEEDING LINE



1. Hopper body
2. Feed tube (with auger inside)
3. Feeder pan
4. Control pan(with feed level sensor)
5. Motor
6. Connector box
7. End tube
8. Anti-perching system
9. Lifting and suspension system
10. Hopper bin
11. Beam

U-Best adopt advanced European and US technology in environmental ventilation concept, undertakes to design large & medium farm project and old farm renovation project. We will provide customized design and solutions continuously to satisfy your all requirements.

### Hopper



- \* Structure : Assembled hopper, save shipping space and better for protecting surface galvanized layer.
- \* Thickness : 1.2mm
- \* Material : 275g galvanized sheet.

### Sensor



- Two kinds of imported sensors to choose:
- \* Germany IFM feed level sensor (double wires),
  - \* Israel Agrologic feed level sensor (three wires).

### Motor



- \* Die-cast aluminium alloy shell and input & output flange, excellent heat dissipation, no rust, stable and reliable.
- \* Split Gearbox, quick and easy to replacement.

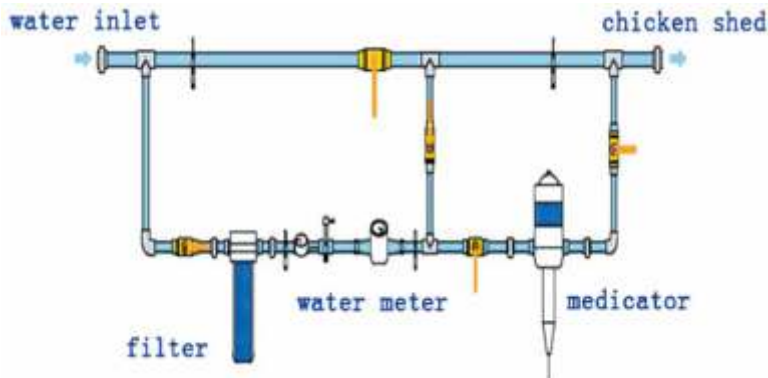
Equipment length	0-60m	60-80m	80-100m	100-120m	120-150m
Single phase	0.37KW	0.75KW	0.75KW	1.1KW	1.5KW
Three phase	0.37KW	0.37KW	0.75KW	0.75KW	1.1KW

## Nipple drinking line



Automatic nipple drinking system include: Front system, Main water supply system, Water inlet system, Pressure regulator & the end of drinking line, Nipple drinking line, Lifting winch, Suspension and lifting system and Anti-perching system.

### Water supply



The front system is composed of water filtration, metering, water pressure display, water pressure regulation, and dosing device. Water supply, pressure supply, and storage device are optional.

### Pressure regulator



Integrated pressure regulation, recoil and water level display. Operating easily and responding quickly. The interval valve is made of pure raw material, soft and anti-aging.

### Lifting winch



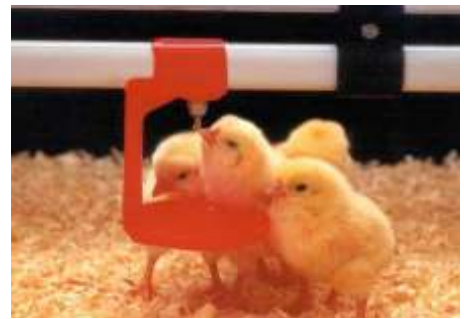
Gear after wear-resisting and strength processing, overall surface is sprayed, pretty appearance and long service life.

## Drinking line



### Square water pipe

- \* Lubing type, the nipple shell is made of POM and stainless steel. It is double-sealed with cone valve. It has good sealing effect and strong stability. The water pipe adopts 22×22 pure raw material PVC square tube with light blocking agent inside to reduce the growth of bacteria and moss in the tube.
- \* Galvanized tube and aluminium alloy triangle are optional.



### Round water pipe

Plasson type, Aluminium alloy support, more corrosion-resistant. Round water pipe, smooth water flow, snap-in type installation, convenient and fast. The nipple is improved double-sealed cone nipple, the effect is better. Hollow designed water cup is more stable.

# AALROOT



smilmeash



**AALROOT**

**3/271 C, Kulathur Road, Venkitapuram  
Chinniampalayam, Coimbatore - 641062  
Tamilnadu, India Ph: +91 7010105777**



**+91 7010105777**



**info@aalroot.com**



**www.aalroot.com**