

Introduction

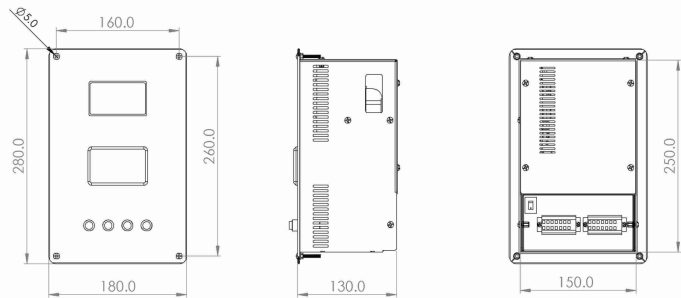
Electronically operated and flow sensor-based, the **SMART WATER CONTROL PANEL** allows you to collect drinking water after making payments through UPI-QR, COIN & eCARD options. It controls the water output based on the price and the volume selection switch. Once the desired quantity is reached, it automatically cuts off the output through a solenoid valve.



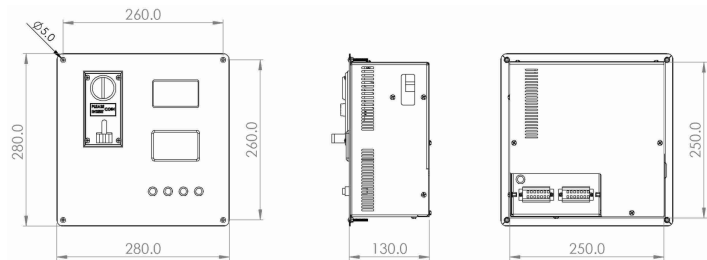
Dimensions

SWQ & SWQE

FRONT VIEW SIDE VIEW BACK VIEW



SWQC & SWQE

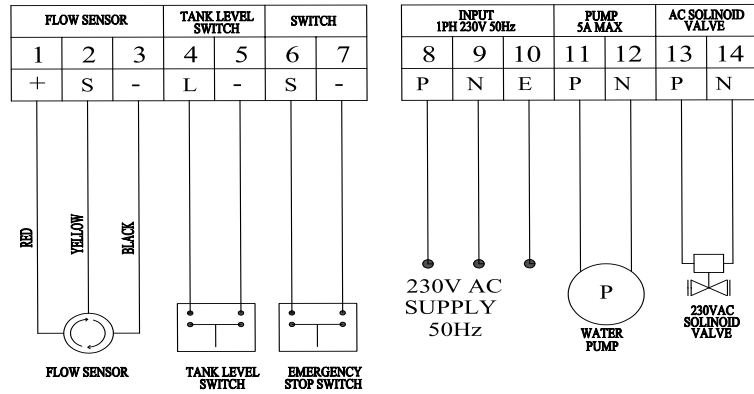


(All dimensions in mm)

Technical Specification

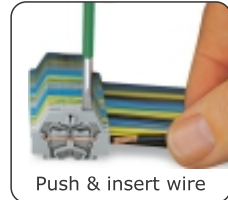
Model	SWQ	SWQE	SWQC	SWQE
Payment Options	QR	QR+eCARD	QR+COIN	QR+COIN+eCARD
Weight (Approx.)	3 Kg		4 Kg	
Input Voltage	1Ph 230V 50Hz			
Power	50Watts			

Wiring Connection



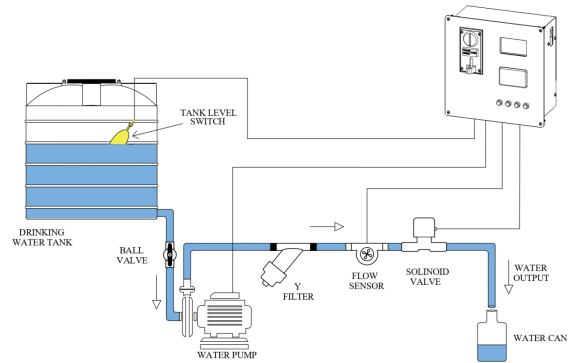
Warning:

- ◆ Please avoid exposing this connection part to water or moisture.
- ◆ Users must not connect or disconnect the device terminals while the power supply is active.
- ◆ Ensure that connections are made properly.

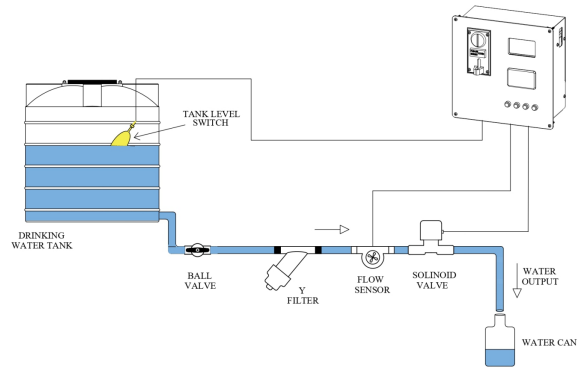


Pipeline Connection Diagram

With Pump



Without Pump

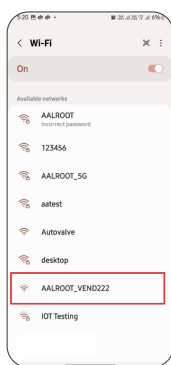


Note : The solenoid valve and flow sensor should be installed in the correct direction, as close as possible to the water output

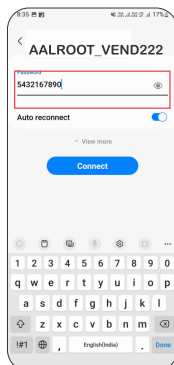
How to Connect the Internet

DEVICE ID = 222
Booting Device...1s

⚠ This device is supported **2.4GHz** frequency only



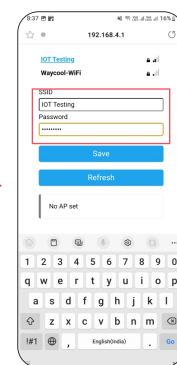
Step :2
Turn on the Wifi on your smart phone and select the **AALROOT_VENDXXXX**



Step :3
Enter the password **"5432167890"** and **"Connect"**



Step :4
Select the **"Configure WIFI"**



Step :5
Select your SSID(Hotspot) and Enter the Password and **"Save"**

WiFi Connected...

Internet Connected

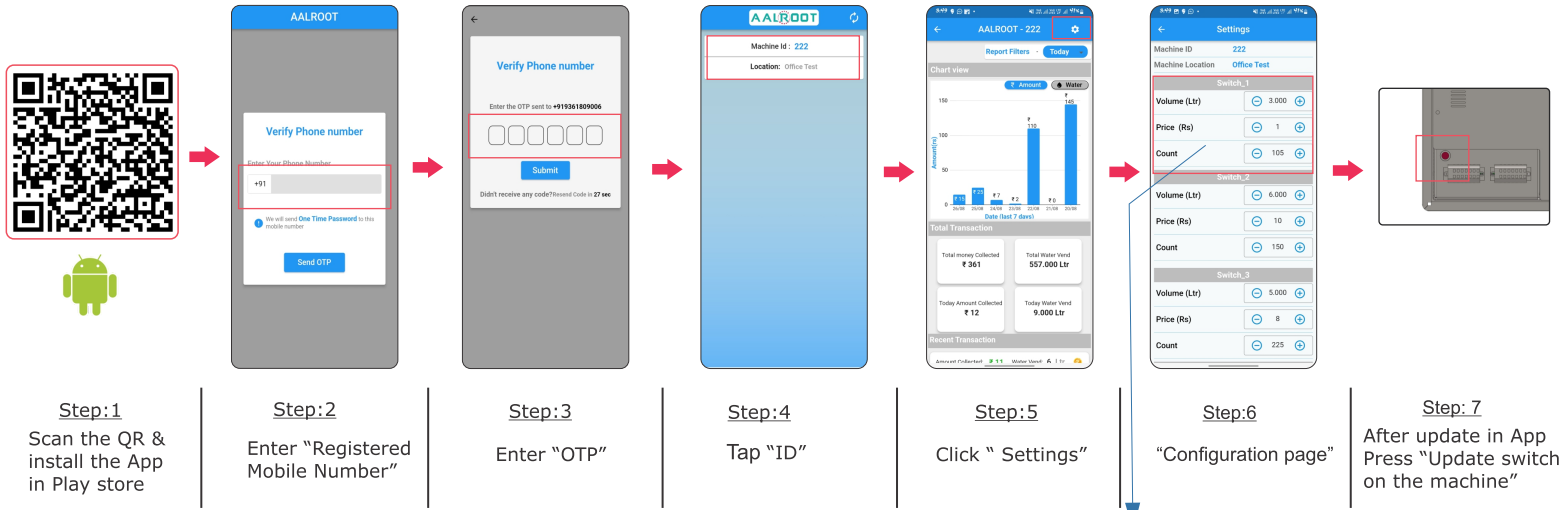
SELECT SWITCH

SWITCH	1	2	3	4
LITRE	1	5	20	10
PRICE	5	10	20	15

by AALROOT 222 11,37V

Ready to Use

App installation & Configuration



Troubleshooting

If display shows	Causes	Solutions
Device is frequently restarted	<ul style="list-style-type: none"> Incorrect user name or password 5Ghz frequency band. Out of range from internet. 	<ul style="list-style-type: none"> Check hotspot name & password. Connect 2.4 Ghz Install the machine within internet range.
HARDWARE 5.0.0 FIRMWARE 1.0.0	<ul style="list-style-type: none"> Internet got disconnected 	<ul style="list-style-type: none"> Connect the internet again
SENSOR ERROR	<ul style="list-style-type: none"> Display flow count not increasing Reached time out. 	<ul style="list-style-type: none"> Check the Flow sensor Connection and wiring Please Contact Aalroot support.
Water keep dropping	<ul style="list-style-type: none"> Solenoid valve direction is reversed. Small dusts or insects might be blocked inside the solenoid valve. 	<ul style="list-style-type: none"> Fix the solenoid valve in correct direction. Open the solenoid valve with suitable screw driver and clean properly.
Display shows unknown letters	<ul style="list-style-type: none"> It could be unstable power supply. 	<ul style="list-style-type: none"> Connect constant 230V AC supply , 50Hz with proper earth. Stabilizer may be required in this condition. Please contact aalroot support
WIFI NOT Connected Please connect WIFI	<ul style="list-style-type: none"> Internet is not available. Internet is disconnected 	<ul style="list-style-type: none"> Check internet connection
LOW WATER LEVEL by AALROOT 222 11,35V	<ul style="list-style-type: none"> Water level is low 	<ul style="list-style-type: none"> Fill the tank

Maintenance

- Switch off the machine before cleaning it.
- Use a soft, dry cloth to clean the display.
- While cleaning, do not allow liquids to enter any of the ventilation holes or openings on the machine.

Factory Default Configuration

Volume Switch	Switch_1	Switch_2	Switch_3	Switch_4
Volume (Ltr)	1.000	5.000	10.000	20.000
Price (Rs)	2	10	15	20
Count	450	2500	4500	9000

For example, for Switch_1

- Enter volume : 1.000 Ltr
 - Enter price : Rs.2
 - Enter count : 450
- (Note: 450 is an average count for 1 litre; it may vary based on the site. Increase/decrease the count gradually as needed.)

Proceed to follow the same steps for the remaining volume selection options based on required liters.

Packing list

- ✓ Mains guard -1nos
- ✓ 1/2" Solenoid valve -1nos
- ✓ 1/2" Flow sensor -1nos
- ✓ User manual -1nos
- ✓ Coin tray key -1nos (SWQCE & SWQC Models only)
- ✓ Mounting screws - 4nos

Warranty

This product has under gone strict quality inspection before delivery and complying with our quality control standard . If any failure happen during the warranty period and within the normal operating condition, we will be responsible for repair service at free of cost. We guarantee this unit for a period of one year after the date of invoice.

The following conditions exempt us from our repair service at free of cost.

- Misuse, improper use neglect by the user.
- Failure from any water damage.
- Using this machine under abnormal condition.
- Failure happens because of not using original parts furnished by us.
- This warranty is void if without our company stamp.
- Using this unit beyond the working range.
- This warranty is effective only in India.

Customer Details

Customer :

Invoice No:

Model :

Date :

S.no :

Manufactured by

AALROOT
3/271 C Kulathur road, Venkittapuram,
Chinniampalayam, Coimbatore 641 062, Tamil nadu, INDIA.
Email: info@aalroot.com